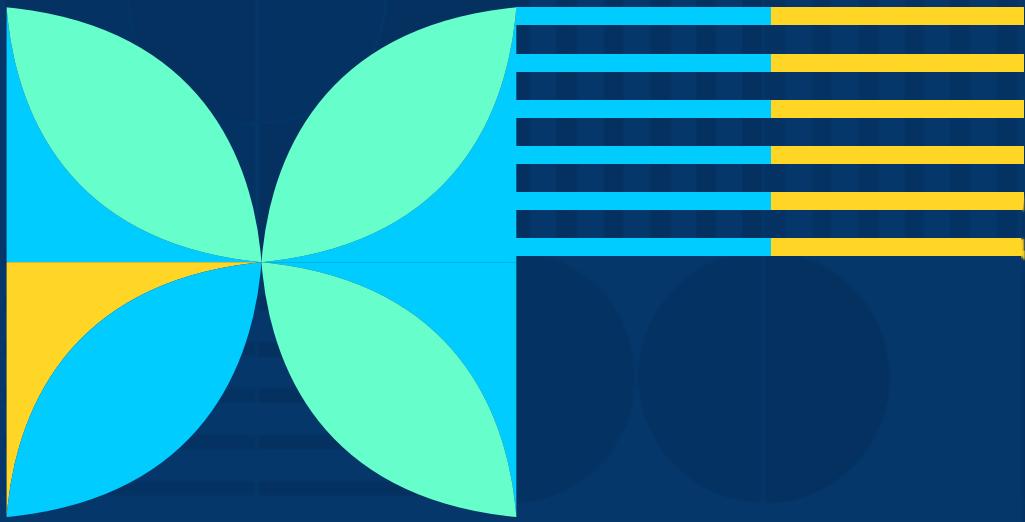


Response Risk Mitigation Plan
EWER Stakeholders Forum and Community Safety Partners
Plateau, Kaduna, Zamfara and Taraba



Security Risk



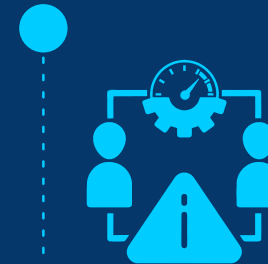
Threat to life

Possible Responses



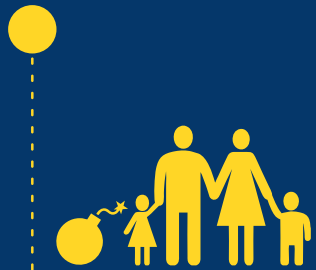
- 1 Get information about the threat
- 2 Get evidence of the threat
- 3 Report to the Police/Vigilante/Military
- 4 Leave the community/area to a safe place
- 5 Notify CLEEN EWER Project State Coordinator

Possible Mitigation Strategies



- 1 Find information about the threat to understand the reason
- 2 Constantly monitor trend and patterns of attack
- 3 Carry out regular context analysis
- 4 Maintain low profile life; and
- 5 Organise constant interface with conventional and community security agencies and other stakeholders.

Security Risk



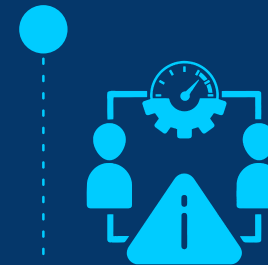
**Threat to life
of a loved
one/family**

Possible Responses



- 1 Get information about the threat
- 2 Get evidence of the threat
- 3 Report to the Police/Vigilante/Military
- 4 Notify CLEEN EWER Project State Coordinator

Possible Mitigation Strategies



- 1 Find information about the threat to understand the reason
- 2 Constantly monitor trend and patterns of attack
- 3 Carry out regular context analysis
- 4 Maintain low profile life; and
- 5 Organise constant interface with conventional and community security agencies and other stakeholders.

Security Risk



Attack on Community
(sporadic shooting,
burning of houses,
killing of community
members)

Possible Responses



**During the
attack:**

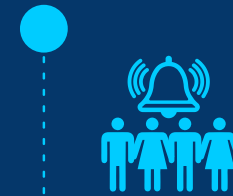
- 1 Call security agencies
- 2 Get to a safe place/Evacuate community members
- 3 Document/record the attack as safely as possible



**After the
attack:**

- 1 Ask each household to account for their members
- 2 Document the evidence of the attack (e.g. pictures of damaged buildings)
- 3 Generate a list of survivors and victims
- 4 Report to the security agencies and on the CLEEN app
- 5 Do not engage in reprisal action
- 6 Notify State Coordinator

Possible Mitigation Strategies



**Before the
attack:**

- 1 Identify a central location for all residents to gather or agree on an escape route
- 2 Encourage community members to share any security information they have with EWER members
- 3 Establish an alarm system for the community (texts messages, bells, torchlight signals)



**After the
attack:**

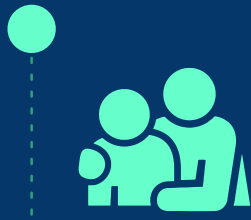
- 1 Organise a community meeting to discuss the attack
- 2 Identify a de-escalation measure
- 3 Create, communicate and train community members on emergency response plans options.
- 4 Strengthen early warning signs such as information gathering and increase linkages between communities and security agencies.

Security Risk



Abduction/Kidnapping

Possible Responses



- 1 Create a list of victims
- 2 Report to security agents and on the CLEEN app
- 3 Organise a search party
- 4 Identify and select a negotiator
- 5 Consult community leadership and EWER Forum members
- 6 Notify CLEEN EWER Project State Coordinator

Possible Mitigation Strategies



- 1 Monitor trends and identify security weaknesses in the community
- 2 Hold dialogue sessions with security agencies with the goal of increasing their response to the community

Security Risk



Cattle-rustling

Possible Responses



- 1 Create a list of affected businesses
- 2 Report to security agents and on the CLEEN app
- 3 Organise a search party to trace movement
- 4 Consult community leadership and EWER Forum Members
- 5 Notify CLEEN EWER Project State Coordinator

Possible Mitigation Strategies



- 1 Monitor trends and identify security weaknesses in the community
- 2 Hold dialogue sessions with security agencies with the goal of increasing their response to the community

Security Risk



Illegal levies on communities

Possible Responses



- 1 Hold a community strategy meeting
- 2 Consult with community, religious and traditional institutions
- 3 Report to security agents and state governments
- 4 Consult community leadership and EWER Forum Members
- 5 Notify CLEEN EWER Project State Coordinator

Possible Mitigation Strategies



- 1 Monitor trends and identify security weaknesses in the community
- 2 Hold dialogue sessions with security agencies with the goal of increasing their response to the community

Security Risk



Ethno-religious and/or communal clash

Possible Responses



- 1 Assess the attack/violence and main motivation
- 2 Consult with community, religious and traditional institutions
- 3 Consult EWER Forum Members
- 4 Establish a conflict resolution committee and ensure all parties are represented and the recommendations are implemented
- 5 Report to security agents and state governments
- 6 Notify CLEEN EWER Project State Coordinator

Possible Mitigation Strategies



- 1 Monitor trends and identify risk of a recurrence of clash in the community
- 2 Organise dialogue sessions between conflicting parties
- 3 Hold dialogue sessions with security agencies with the goal of increasing their response to the community

Security Risk



Farmer/Herder clash

Possible Responses



- 1 Assess the attack/violence and main motivation
- 2 Consult with community, religious and traditional institutions
- 3 Establish a conflict resolution committee and ensure all parties are represented and the recommendations are implemented
- 4 Report to security agents and state governments
- 5 Notify CLEEN EWER Project State Coordinator

Possible Mitigation Strategies



- 1 Monitor trends and identify risk of a recurrence of clash in the community
- 2 Organise dialogue sessions between conflicting parties
- 3 Hold dialogue sessions with security agencies with the goal of increasing their response to the community

Security Risk



**EWER members
suspected to be spies**



Possible Responses



- 1 Consult the community leadership and state coordinators for confidential input and assessment of suspicion
- 2 Organise a 'community' meeting to clarify the roles of the EWER Forum members
- 3 Ensure that information that needs to be confidential remains confidential and is communicated to the state coordinator

Possible Mitigation Strategies



- 1 Hold quarterly town hall meetings with community members to discuss the activities of the EWER Forum
- 2 Create trust building activities and ensure everyone understands the importance of inter-community support.
- 3 Ensure that all EWER members take a commitment oath

THANKS

